

Product Information

Total Tree Management System



Mapping Tools

- Create Redline
- Zoom in
- Zoom out
- Zoom window
- Zoom to previous
- Zoom to Scale
- Layers on/off
- Imagery support
- Copy to Clipboard
- Bookmark map area
- Select Radius
- Select Polygon
- Create buffer
- Distance Measurement



Total Tree Management System developed by **Ennoble Consultancy** is a powerful, easy-to-use application for better tree management. For performing on-site auditing on trees and data collection, as well as production of work records and tree reports generation, it provides an all-in-one solution to make tree management much more effective and efficient than ever.

Comprising the use of **tablet PC** for mobility of on-site auditing; **GPS** for real-time position tracking; **satellite imagery** on the map for accuracy of data collection; and with the user-friendly interface and well-designed inspection form, **EC Total Tree Management System** is the next-generation tree management tool that can't be missed.

Functionality:

- Graphical display of tree location, status and attributes on the map
- Ability to add new trees, move trees or delete trees on the map
- Ability to record tree status on inspection sheets during on-site auditing
- Create work record after treatment is done to a tree
- Ability to assign risk score and set work priority for a tree
- Ability to send work to field crews
- Ability to search tree records in various themes
- Ability to upload photos and export data to Excel
- Ability to access various tree reports and analyze data

To view the application sample, feel free to visit the website: <http://hume.ennoble.com.au/htms>

To run the application, it is required to have Autodesk MapGuide ActiveX Control installed, which can be downloaded at no expense from the website: <http://www.mapguide.com/>

Contact:

Ennoble Consultancy

Ph: +613-9500-2489

Email: info@ennoble.com.au

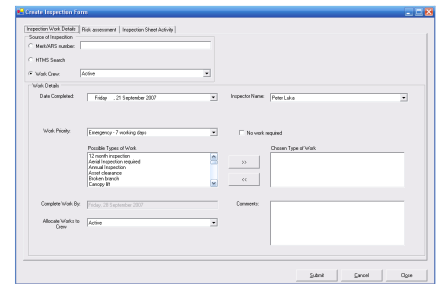
Suite 1 / 97 Kooyong Road

Armadale 3143 Victoria

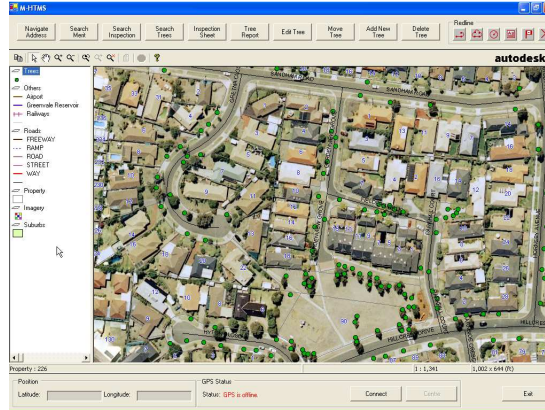
Australia



GPS device to transfer current longitude and latitude coordinates to tablet PC

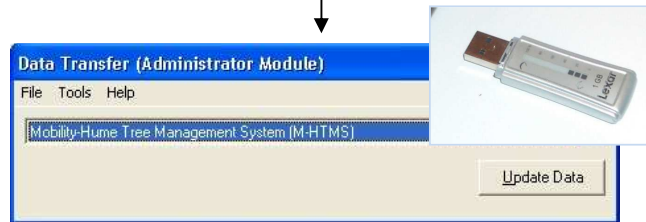


Create Inspection Record

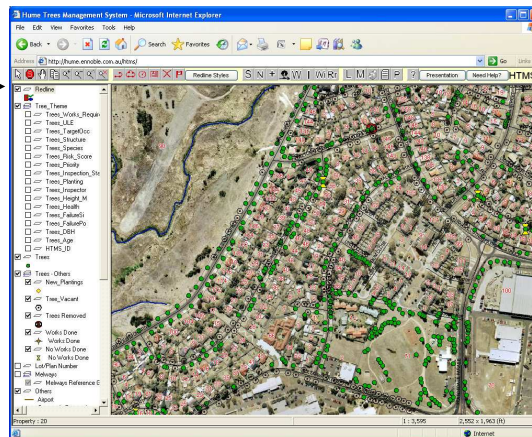


Add new tree, move tree or delete tree

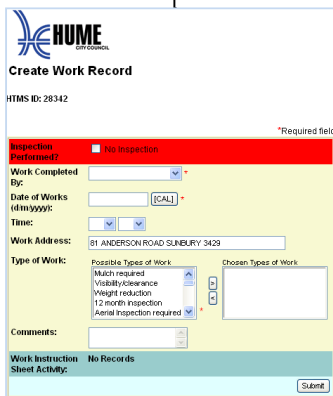
Mobile Tree Management Module for on-site auditing



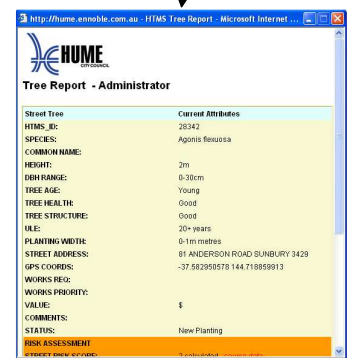
Data transferred from tablet PC to USB, then to the database server



Tree Management Web Module to show data collected on-site



Create work record after treatment is done to a tree



Tree report, showing tree info, risk assessment, photos and work history